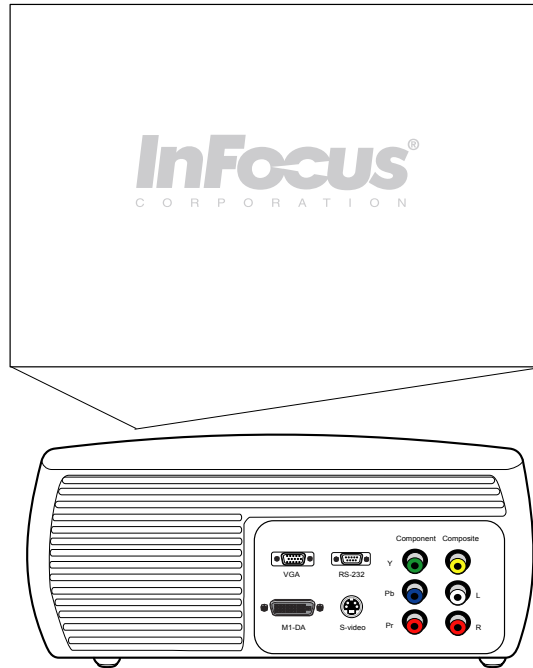


# InFocus Projector Setup Guide for a Macintosh Laptop

*How to connect a laptop computer to an InFocus projector*



## Table of Contents



- If you have an Apple iBook G3/G4, see [page 2](#).



- If you have an Apple PowerBook G4 12 inch, see [pages 3-5](#).



- If you have an Apple PowerBook G4 15 inch, see [pages 6-7](#).



- If you have an Apple PowerBook G4 17 inch, see [pages 8-9](#).

## For more information and troubleshooting...

Read the common issues on [pages 10-15](#).

## Setup Requirements

- Apple iBook with Monitor/Video Out Port
- Projector with M1 port
- M1 to VGA/USB cable (6 ft, InFocus part #SP-DVI-A)
- Apple VGA adapter (Apple part# M8639G/A)

**1**

Plug the Apple VGA adapter into the monitor/video out port. Plug the VGA connector into the adapter.

**2**

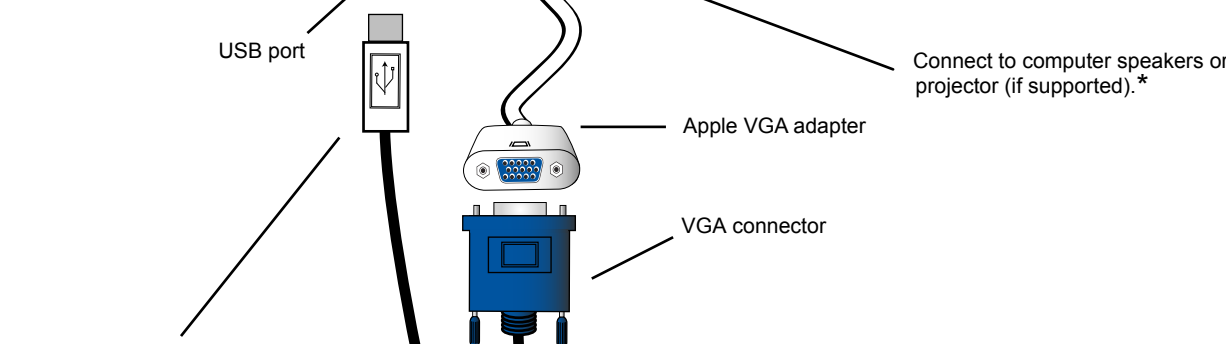
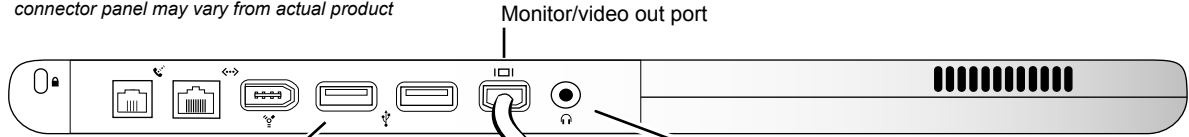
Plug the M1-A connector into the M1 port on the projector.

**3**

Power on the projector, then the computer. If the image does not appear on the screen, see [Common Issues](#).

## Apple iBook Connector Panel

connector panel may vary from actual product

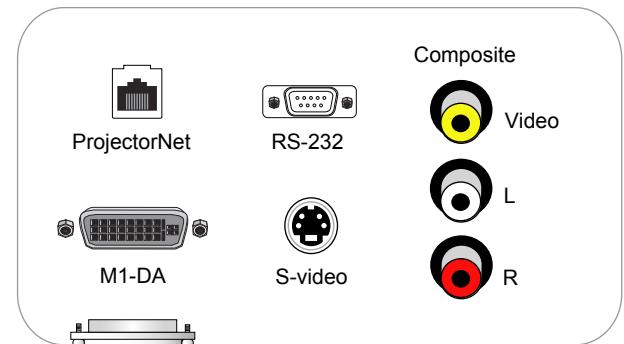


USB connector for Microsoft PowerPoint or mouse control with InFocus remote. (Not required for projector use)

Connect to computer speakers or projector (if supported).\*

## Projector Connector Panel

connector panel may vary from actual product



M1 to VGA/USB cable (6 ft) (InFocus standard accessory)

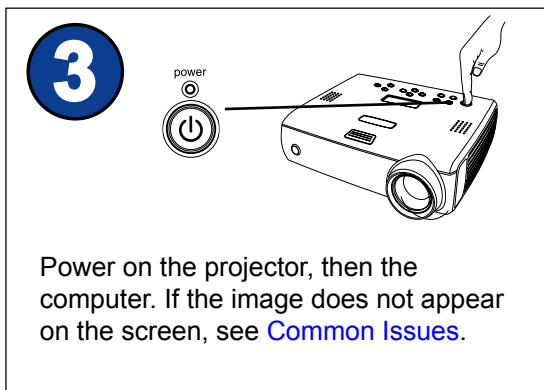
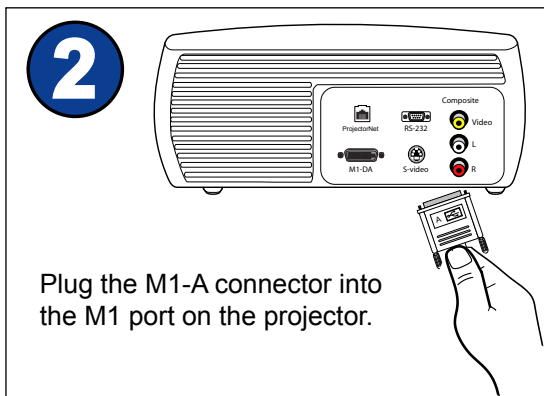
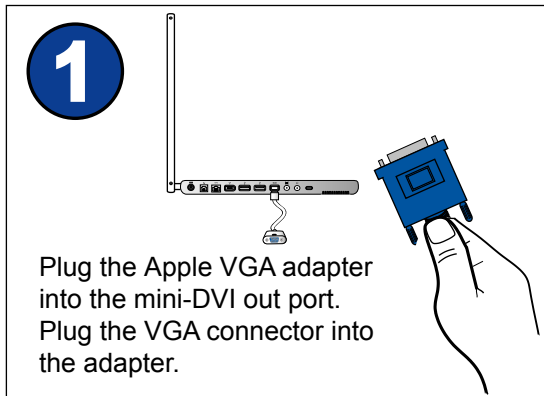
M1-A connector

\* We recommend connecting the computer to external speakers to provide the best audio experience.



## Setup Requirements

- Apple PowerBook G4 (12-inch/DVI) with Mini-DVI out port
- Projector with M1 port
- M1 to VGA/USB cable (6 ft, InFocus part #SP-DVI-A)
- Apple Mini-DVI to VGA adapter (Apple Part#M9320G/A)



## Apple PowerBook G4 (12-inch - DVI) Connector Panel

connector panel may vary from actual product



USB port

Mini-DVI out port

Connect to computer speakers or projector (if supported).\*

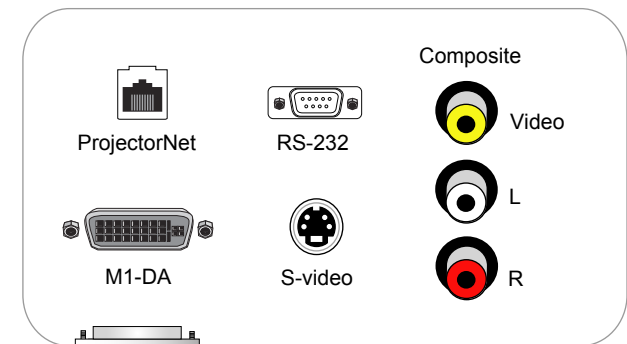
USB connector for Microsoft PowerPoint or mouse control with InFocus remote. (Not required for projector use)

Apple VGA adapter

VGA connector

## Projector Connector Panel

connector panel may vary from actual product



M1 to VGA/USB cable (6 ft)  
(InFocus standard accessory)

M1-A connector

\* We recommend connecting the computer to external speakers to provide the best audio experience.



## Setup Requirements

- Apple PowerBook G4 (12-inch/DVI) with Mini-DVI out port
- Projector with M1 port
- M1 to DVI/USB cable (6 ft, InFocus part #SP-DVI-D)
- Apple Mini-DVI to DVI adapter (Apple part #M9321G/A)

**1**

Plug the Apple DVI adapter into the mini-DVI out port. Plug the DVI connector into the adapter.

**2**

Plug the M1-D connector into the M1 port on the projector.

**3**

Power on the projector, then the computer. If the image does not appear on the screen, see [Common Issues](#).

## Apple PowerBook G4 (12-inch/DVI) Connector Panel

connector panel may vary from actual product



USB port

Mini-DVI out port

Connect to computer speakers or projector (if supported).\*

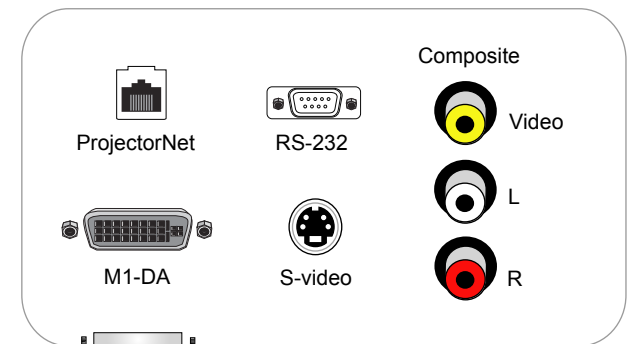
Apple DVI adapter

DVI connector

USB connector for Microsoft PowerPoint or mouse control with InFocus remote. (Not required for projector use)

## Projector Connector Panel

connector panel may vary from actual product



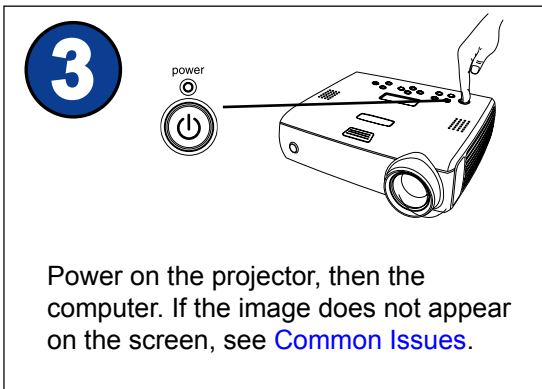
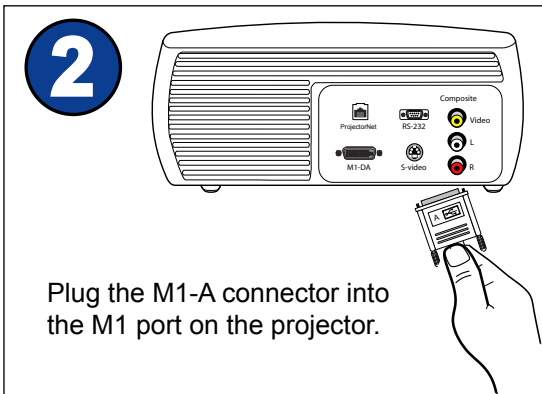
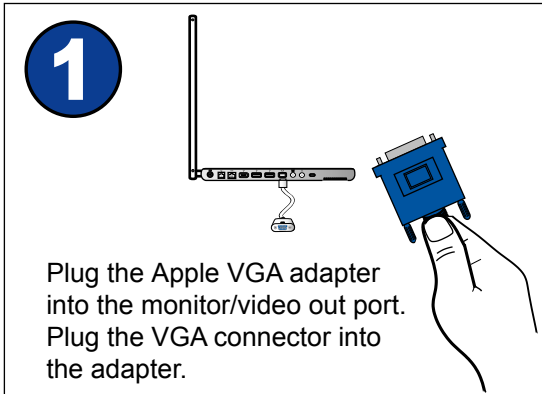
M1 to DVI/USB cable (6 ft)  
(InFocus optional accessory)

M1-D connector

\* We recommend connecting the computer to external speakers to provide the best audio experience.

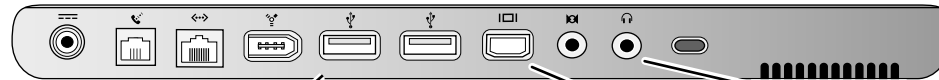
## Setup Requirements

- Apple PowerBook G4 (12-inch) with Monitor/video out port
- Projector with M1 port
- M1 to VGA/USB cable (6 ft, InFocus part #SP-DVI-A)
- Apple VGA adapter (Apple part# M8639G/A)



## Apple PowerBook G4 (12-inch) Connector Panel

connector panel may vary from actual product



USB port

monitor/video out port

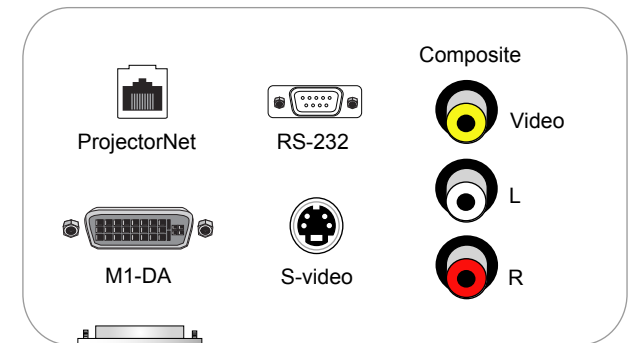
Connect to computer speakers or projector (if supported).\*

USB connector for Microsoft PowerPoint or mouse control with InFocus remote. (Not required for projector use)

VGA connector

## Projector Connector Panel

connector panel may vary from actual product



M1 to VGA/USB cable (6 ft)  
(InFocus standard accessory)

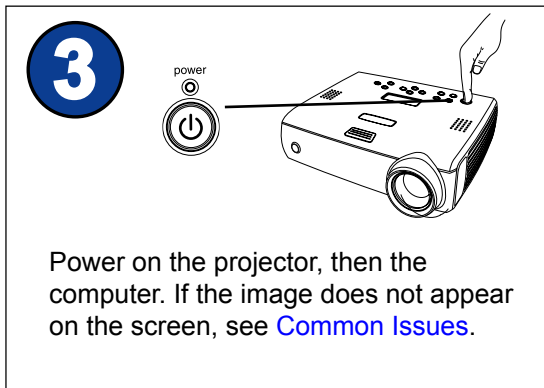
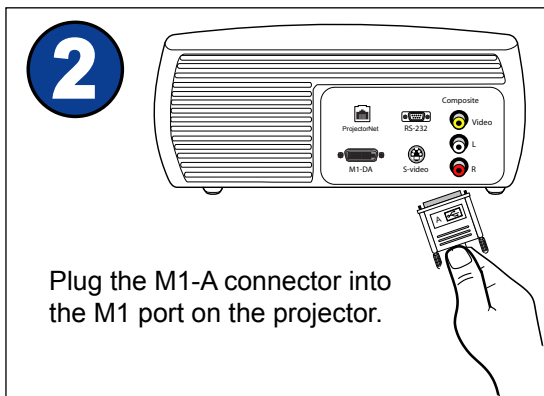
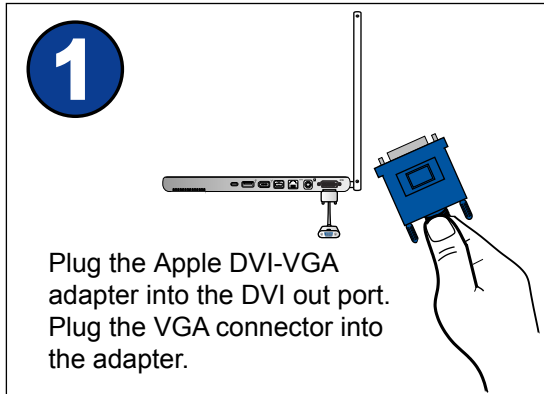
M1-A connector

\* We recommend connecting the computer to external speakers to provide the best audio experience.



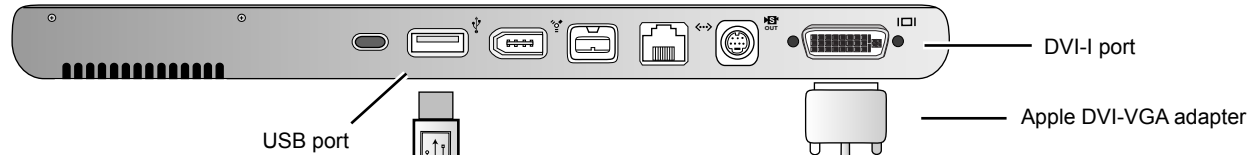
## Setup Requirements

- Apple PowerBook G4 (15-inch/DVI) with DVI-I out port
- Projector with M1 port
- M1 to VGA/USB cable (6 ft, InFocus part #SP-DVI-A)
- Apple DVI to VGA adapter (Apple part #M8754G/A)



## Apple PowerBook G4 (15-inch/DVI) Connector Panel

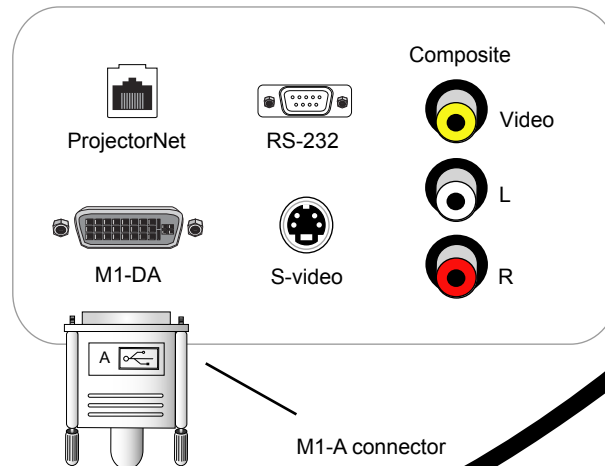
connector panel may vary from actual product



USB connector for Microsoft PowerPoint or mouse control with InFocus remote. (Not required for projector use)

## Projector Connector Panel

connector panel may vary from actual product



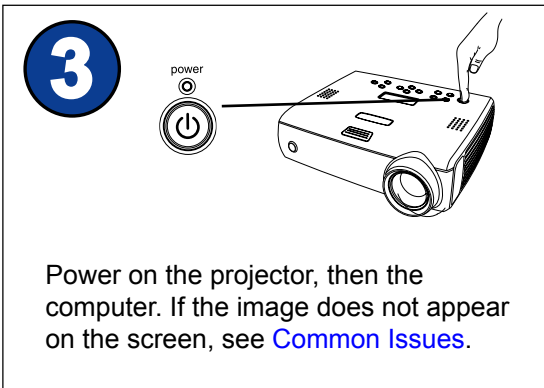
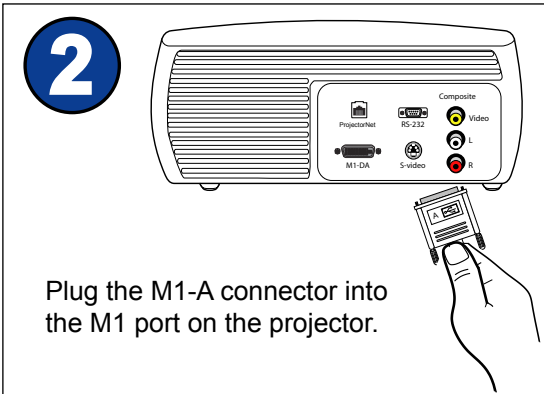
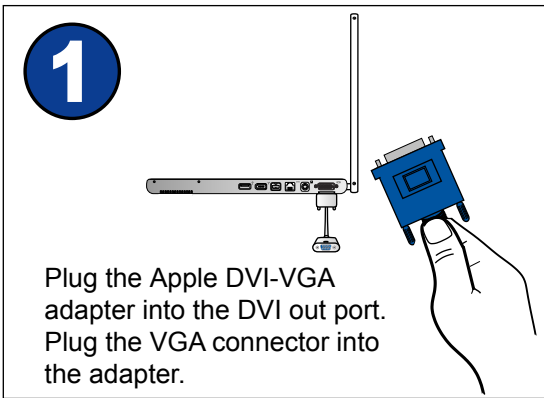
M1 to VGA/USB cable (6 ft)  
(InFocus standard accessory)

**NOTE:** We recommend connecting the computer to external speakers to provide the best audio experience.



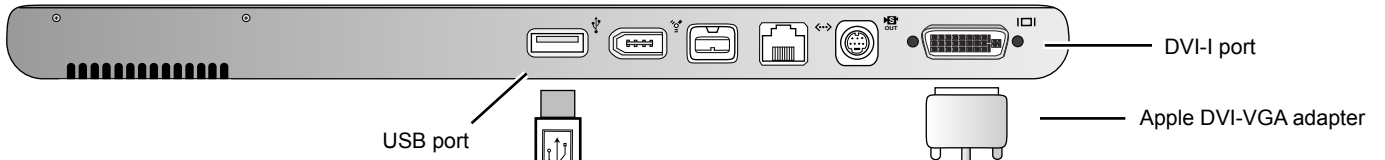
## Setup Requirements

- Apple PowerBook G4 (17-inch) with DVI-I out port
- Projector with M1 port
- M1 to VGA/USB cable (6 ft, InFocus part #SP-DVI-A)
- Apple DVI to VGA adapter (Apple part #M8754G/A)



## Apple PowerBook G4 (17-inch) Connector Panel

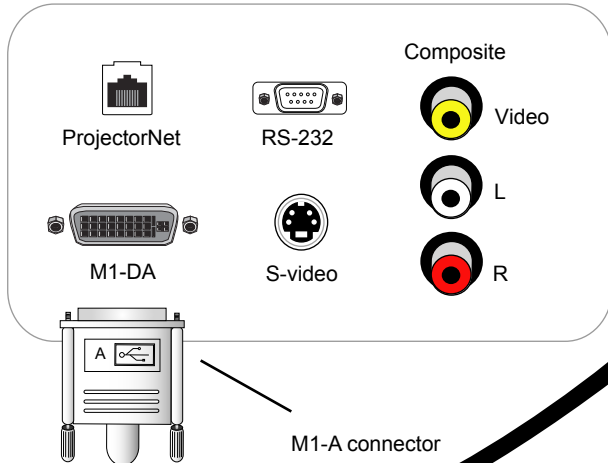
connector panel may vary from actual product



USB connector for Microsoft PowerPoint or mouse control with InFocus remote. (Not required for projector use)

## Projector Connector Panel

connector panel may vary from actual product



\* We recommend connecting the computer to external speakers to provide the best audio experience.





## Setup Requirements

- Apple PowerBook G4 (17-inch) with DVI-I out port
- Projector with M1 port
- M1 to DVI-D/USB cable (6 ft, InFocus part #SP-DVI-D)

**1**

Plug the DVI connector into the DVI port on the computer.

**2**

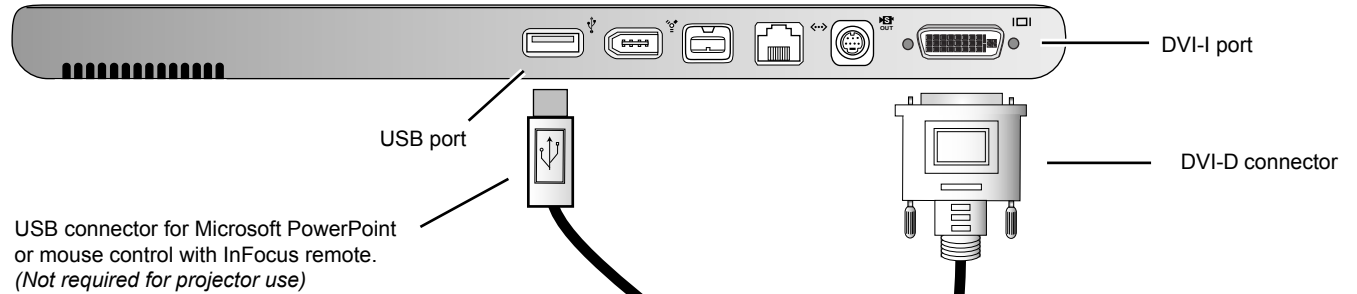
Connect the M1-D connector to the M1 port on the projector.

**3**

Power on the projector, then the computer. If the image does not appear on the screen, see [Common Issues](#).

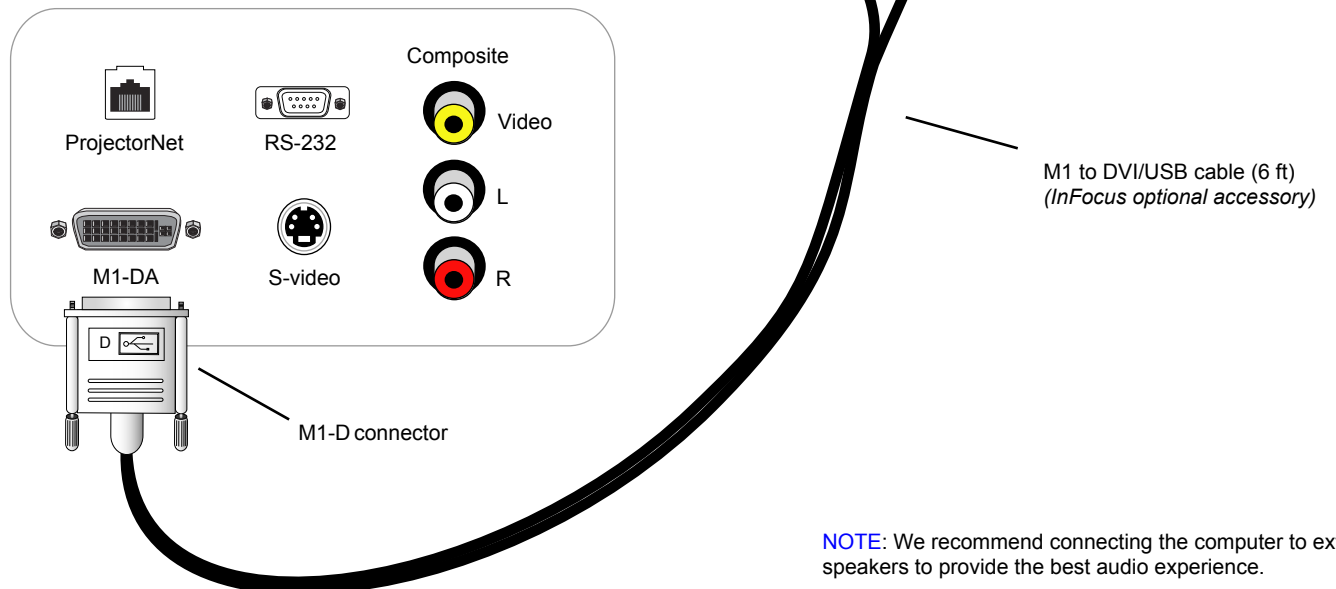
## Apple PowerBook G4 (17-inch) Connector Panel

*connector panel may vary from actual product*



## Projector Connector Panel

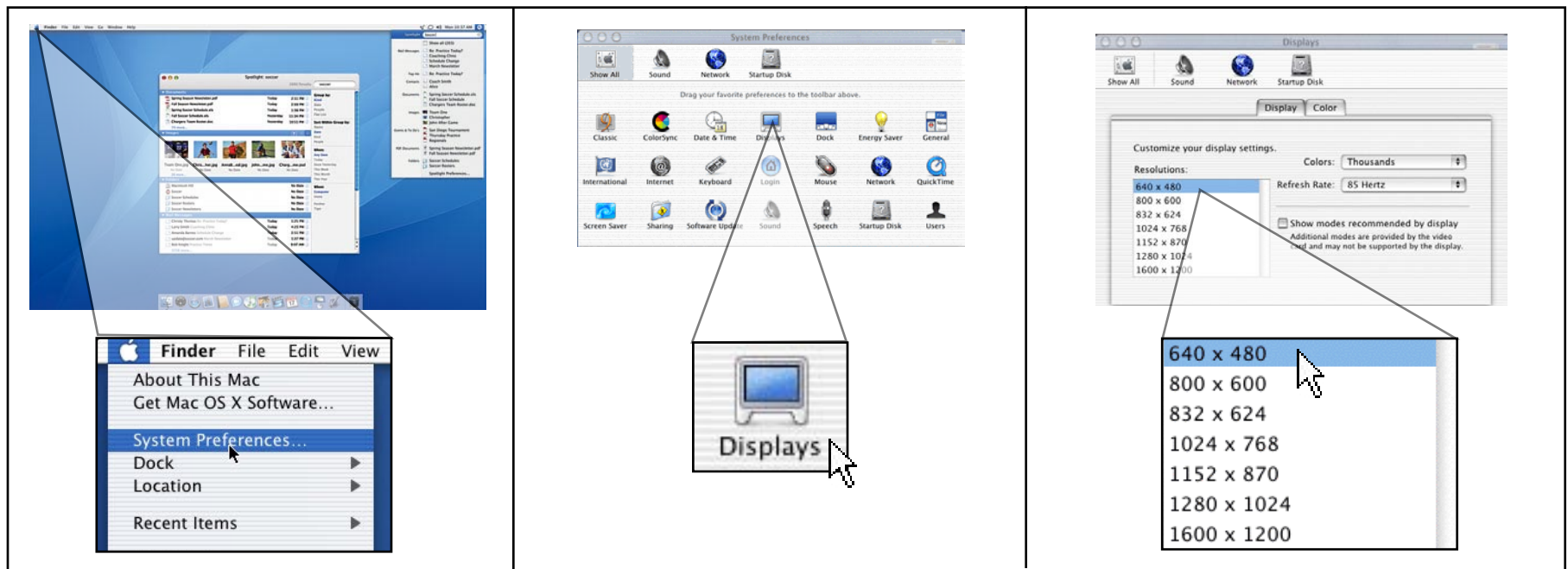
*connector panel may vary from actual product*



**NOTE:** We recommend connecting the computer to external speakers to provide the best audio experience.

## How do I get my computer image on the projector?

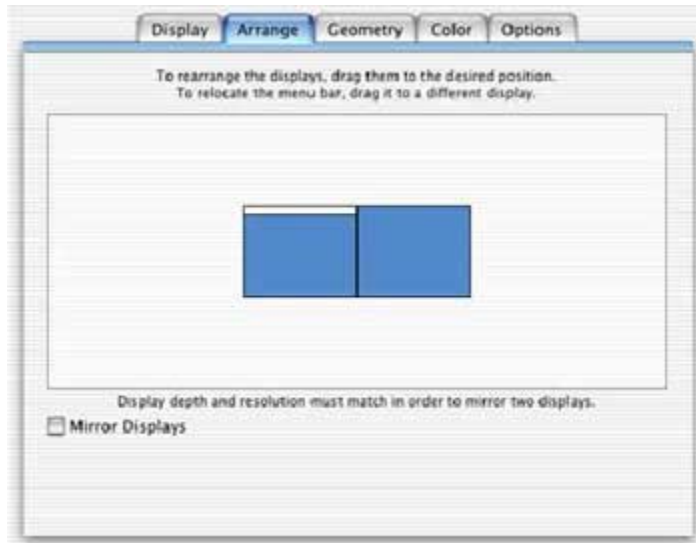
1. Make sure your cables are securely seated on the projector and computer.
2. Turn on the projector first, then the computer.
3. If no image appears, make sure the resolution and refresh rate are configured to match the native resolution of the projector. Most InFocus projectors are either 800 x 600 (SVGA) or 1024 x 768 (XGA)
4. To confirm or set the resolution, go to Apple Menu > System Preferences > Displays. In the Display dialog box, select the appropriate resolution.



(The actual screens may vary, depending on which operating system and computer model you have.)

5. See [next page](#) for more information.

5. On some Mac models, you may see an Arrange tab that will allow you to activate the external monitor port by clicking on Mirror Displays or dragging the monitors over each other. Typically, your computer image will appear on the projector upon turning on your computer.

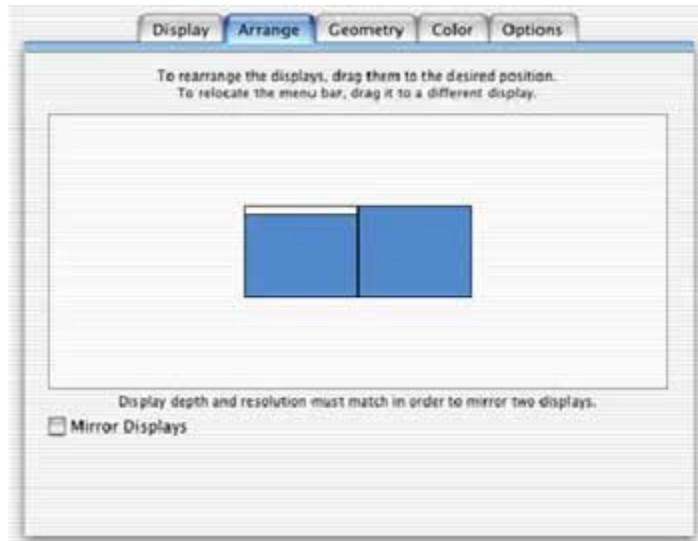


(The actual screen may vary, depending on which operating system and computer model you have.)

## The projected image only displays the background or wallpaper without any icons.

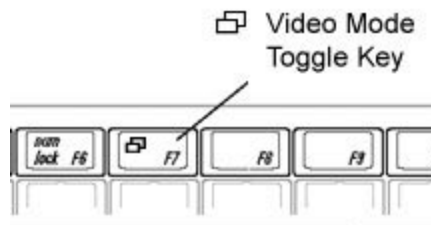
If you only see a background without any icons, you have Extended Desktop enabled. This means that half of your desktop will be on your laptop and the other half will be on the projector. Typically, the computer defaults to Video Mirroring each time you turn it on.

1. To enable Video Mirroring mode, go to Apple Menu > System Preferences > Displays.
2. Under the Arrange Tab, enable Mirror Displays or drag one monitor over each other.



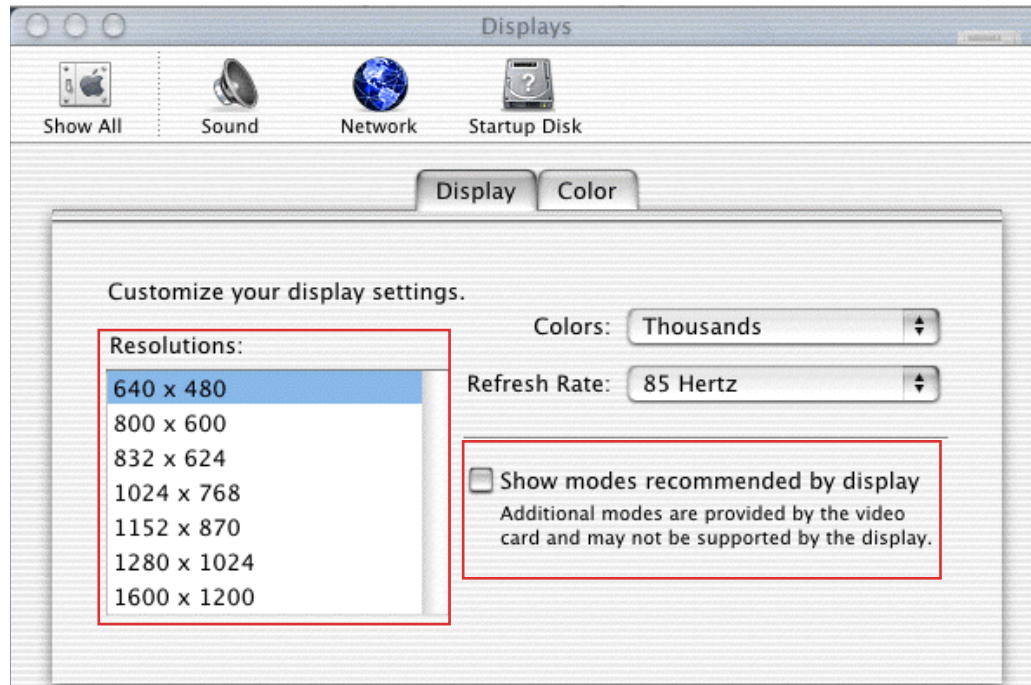
(The actual screen may vary, depending on which operating system and computer model you have.)

3. If you have a PowerBook G4, the mirror mode can often be enabled by pressing the F7 key on the top of the keyboard.



The projector will not allow me to increase my resolution higher than 800x600 or 1024x768.

1. Go to Apple Menu > System Preferences > Displays
2. Clear the Show Modes Recommended by Display checkbox. (bottom right portion of the Display tab)
3. Once you clear the checkbox, you can change the resolution.



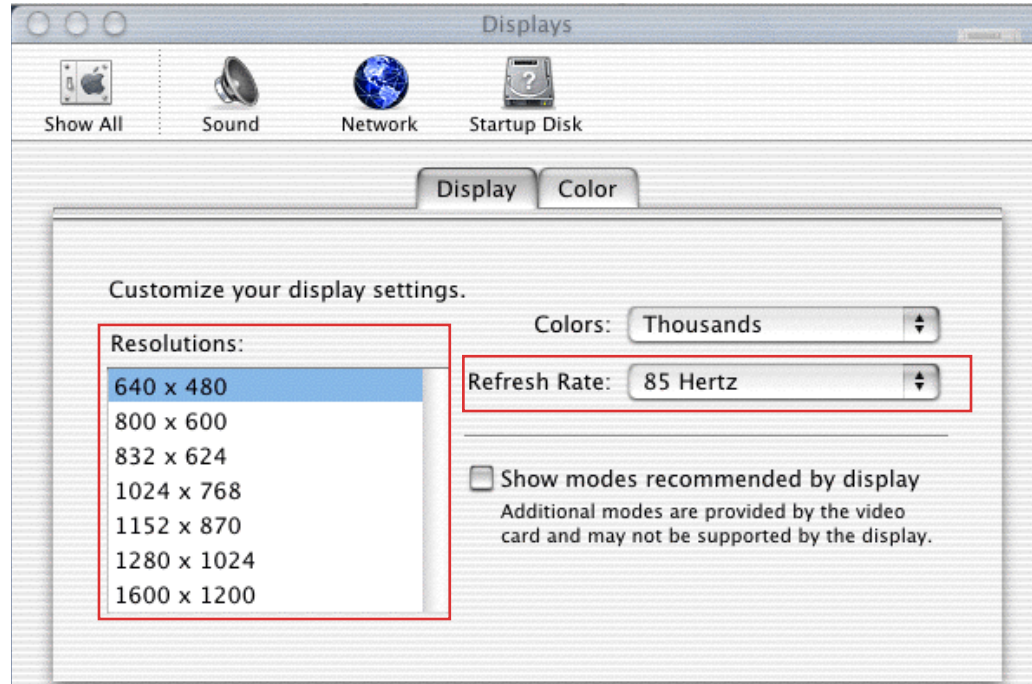
(The actual screen may vary, depending on which operating system and computer model you have.)

**Note:** We recommend that you keep the resolution set at the native resolution of the projector. and the refresh rate set between 60-85Hz. Most computers will default to the native resolution of the projector.

## The image on the computer monitor and/or projection screen flickers.

1. If you are using a laptop, always use AC power instead of the battery.
2. Make sure the resolution is configured according to the native resolution of the projector. Refresh rate should be set between 60 Hz to 85 Hz.

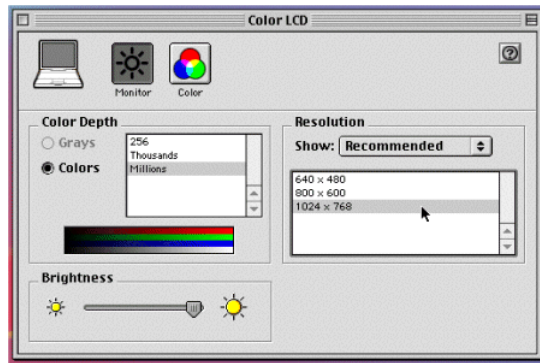
Go to Apple Menu > System Preferences > Displays to change the resolution and refresh rate.



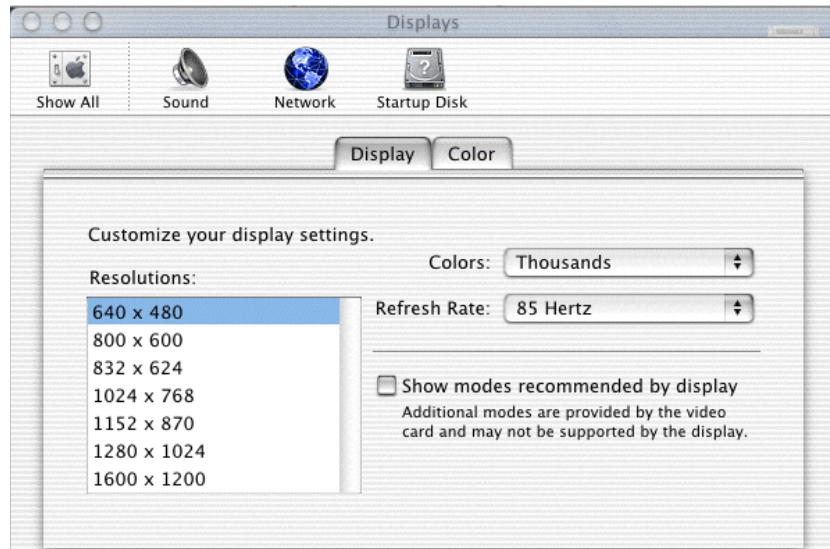
(The actual screen may vary, depending on which operating system and computer model you have.)

**Note:** Some computers have locked refresh rates based on the resolution. Check with Apple Technical Support if you are unable to change your refresh rate. If the refresh rate is above 85Hz, it may result in an unstable or unclear image. See [Appendix](#) for more information about your computer model.

## OS 8.x/9.x > Control Panel > Monitor or Display



## OS 10.x > System Preferences > Display



PowerBook and PowerMac computers typically have adjustable refresh rates, which means you can run a certain resolution at any given refresh rate.

### iMac G3

Resolution	Refresh Rate
640 x 480	117 Hz
800 x 600	95 Hz
1024 x 768	75 Hz

### iMac G4/G5 Flat Panel

Resolution	Refresh Rate
640 x 480	60 Hz
800 x 600	75 Hz
1024 x 768	75 Hz

### iBook

Resolution	Refresh Rate
640 x 480	60 Hz
800 x 600	75 Hz
1024 x 768	75 Hz

### eMac

Resolution	Refresh Rate
640 x 480	138 Hz
800 x 600	112 Hz
1024 x 768	89 Hz
1152 x 864	80 Hz
1280 x 960	72 Hz